

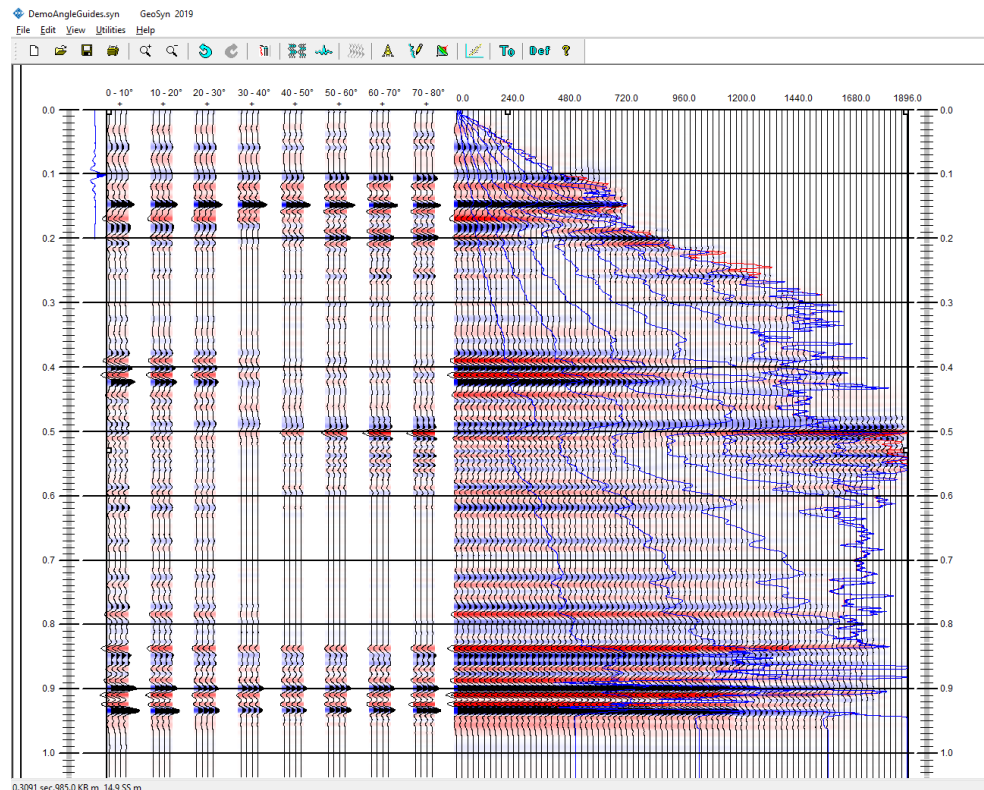


GeoSyn 2019

What's New

GeoSyn

- Use traces along a well bore or extract traces along the well bore for display and analysis
- Display Kingdom time horizons
- Angle guides in AVO display enable users to sum data between angle guides.
- Create a tops list from a time depth chart.
- Export manager and wavelet dialog can now export library wavelets directly.



- Time/Depth Quality Control Plots

Corrected sonic ——— Top of log (corrected) 0.1331 sec.
 Uncorrected sonic ——— Bottom of log (corrected) 1.7317 sec.
 Time depth curve ———

6000.0 ——— ft/sec ——— 21000.0

0 ———

1000 ———

1500 ———

2000 ———

2500 ———

3000 ——— LARIMER

3500 ———

4000 ———

4500 ———

5000 ———

Chart: Local 1-28 Dix_Shifted & Stretched 21-5-9_Edited_1

TD charts Local 1-28 Dix_Shifted & Stretched 21-5-9_Edited_1

#	Depth KB	Time sec	Velocity
1	-22.0	0.000	3508.5 (1 to 2)
2	210.5	0.133	5431.8 (2 to 3)
3	293.5	0.163	5828.4 (3 to 4)
4	577.0	0.260	7942.6 (4 to 5)
5	791.5	0.314	8566.3 (5 to 6)
6	1535.5	0.488	8187.6 (6 to 7)
7	1890.5	0.575	8847.4 (7 to 8)
8	2240.0	0.654	9546.9 (8 to 9)
9	2808.5	0.773	8717.0 (9 to 10)
10	2931.5	0.801	10596.9 (10 to 11)
11	3530.5	0.914	9699.7 (11 to 12)
12	4438.0	1.101	8909.4 (12 to 13)
13	5004.5	1.228	9802.3 (13 to 14)
14	5265.5	1.282	10637.1 (14 to 15)
15	5586.5	1.342	12010.5 (15 to 16)
16	5876.5	1.390	11489.4 (16 to 17)
17	6049.0	1.420	9669.7 (17 to 18)
18	6308.5	1.474	12038.7 (18 to 19)
19	6632.5	1.528	13326.2 (19 to 20)
20	7096.5	1.598	14830.7 (20 to 21)
21	7744.0	1.685	18294.8 (21 to 22)
22	8190.0	1.734	

Edit options

Depth KB Update

Time secs Update

New Delete

Mouse node drag options

☒ Velocity ☐ Depth ☐ Both

Single or multi-node time changes

☐ Lock all but selected node times

☐ Unlock following node times

Regenerate chart by culling times exceeding (usec) Update

Drift correction options

Drift correction Update

Taper (0 to 50%) Update

Display options

to Update

Set scales to chart limits

☒ Velocity ☐ Transit ☐ ft/sec

Zoom in Zoom out

Undo Undo all

OK Cancel Help...